

WAFERLOCK

Security Simplicity

# Smart Lock

User Manual

L700N- L701N

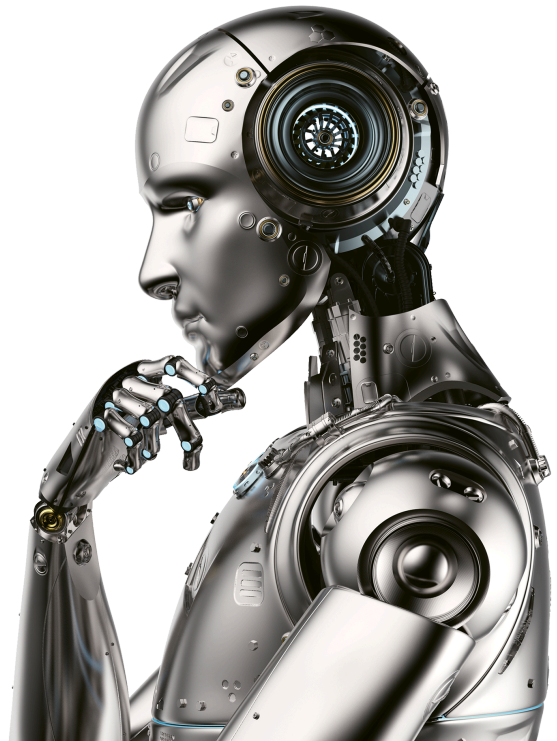
EN

DE

FR

ES

IT



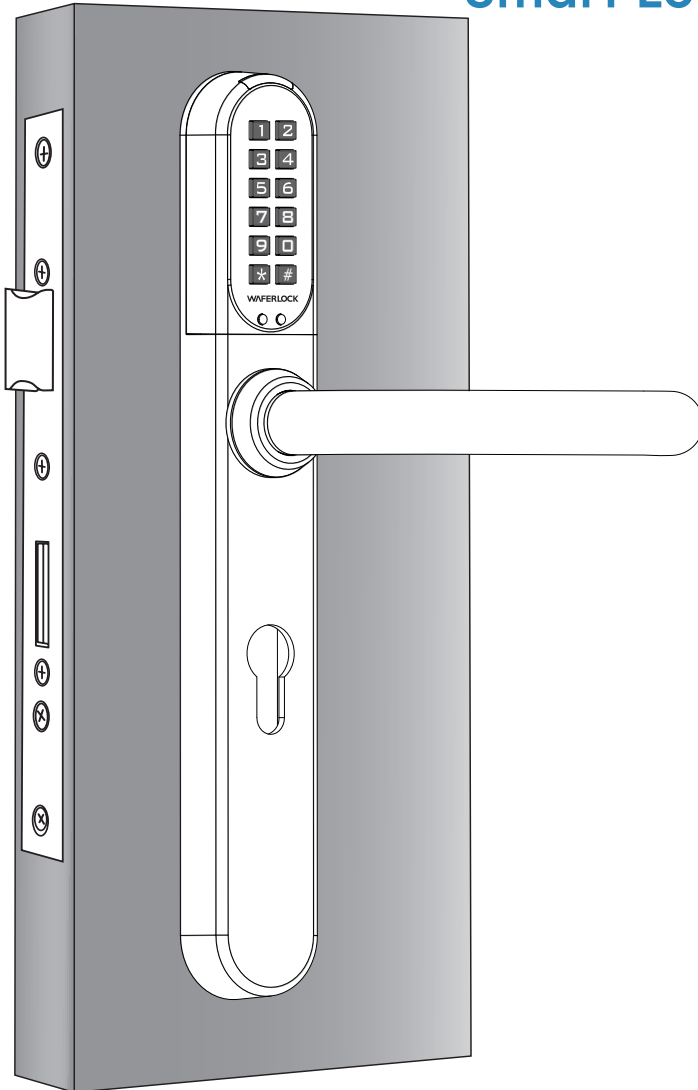
# WAFLERLOCK

Security ∞ Simplicity

## L700N-L701N

### Smart Lock

User Manual



# CONTENT

## P02 Main Feature

### Technical Specification

## P03 Change Master Pin Code

## P04 Lock set up with App

## STANDALONE MODE PROGRAMMING INSTRUCTION

### P05 Program New User Cards / Tags

### P06 Program New Pin Code

### P07 Delete Individual User (Cards / Tags / Pin Codes)

### P08 Delete All User (Cards / Tags / Pin Codes)

### P09 Set Up The Lock As Toggle Mode / Set Up The Lock As Standard Mode

### P10 Set Up The Lock As Dual Mode / Set Up The Lock As Single Mode

### P11 Combination Of Lock Modes / Reset The Lock Master Code

### P12 Open Door With User Card / Open Door With Pin Code

## P13 Low Power Warning / Emergency External Power Supply

## P14 Serial No. / Name List

### **Your Warranty**

Your Warranty covers all manufacturers' defects in workmanship and material. It does not cover any unit that is damaged beyond normal usage, by improper installations, by contacts to chemicals, or any other acts or omissions unsanctioned within the user manual.

All components are covered for one (1) year after the date of purchase or installation from supplier.

The user is required to provide dated proof of purchase. Waferlock or its authorized distributor will determine if there is a warrantable condition associated with material and/or manufacturing workmanship.

If the lock conforms to the warranty conditions, the lock will be repaired free of charge. The shipping freights would be at owner's expense. The warranty does not include any further obligation whatsoever, including but not limited to the installation of the replacement unit to the customer's lock.

All other warranties, express or implied, are disclaimed. All collateral agreements, which purport to modify this limited warranty, are of no effect.

### **CE Marking**

This device has been tested to and conforms to the regulatory requirements of the European Union and has attained CE Marking. The CE Mark is a conformity marking consisting of the letters "CE". The CE Mark applies to products regulated by certain European health, safety and environmental protection legislation. The CE Mark is obligatory for products it applies to: the manufacturer affixes the marking in order to be allowed to sell his product in the European market.

This product conforms to the essential requirements of the R&TTE directive 1999/5/EC in order to attain CE Marking.

The CE Marking is not a quality mark. Foremost, it refers to the safety rather than to the quality of a product. Secondly, CE Marking is mandatory for the product it applies to, whereas most quality markings are voluntary.

## Main Feature

- 4 in 1: Opening the door by pin code, user card / tag, mobile phone, and mechanical key
- UID with Mifare Classic / DESFire and ISO 14443A card
- Low battery with acoustic warning sound
- Number of users:
  - ① Standalone mode: Pin Code + Key Card / Tag, up to 250
  - ② Pairing with App: App Access + Pin Code + Key Card / Tag, up to 2,000
- 4~6 digits user code
- 4~6 digits master code
- Support 9V external power supply
- Adjustable opening mode:
  - ① Standard + Single Mode ( Once unlocking, then automatically locking after 6 seconds. )
  - ② Standard + Dual Mode ( Once unlocking, then automatically locking after 6 seconds + Dual access authentication. )
  - ③ Toggle + Single Mode ( Toggling automatic to manual locking mode. )
  - ④ Toggle + Dual Mode  
( Toggling automatic to manual locking mode + Dual access authentication. )

## Technical Specification

- Escutcheon size: 290mm (H) x 40mm (W) x 20.5mm (D)
- Battery life: Up to 100,000 operations and 1.5 years (10 opening a day), at service 20°C
- Battery: CR2 x 1 pcs
- Suitable for door thickness 35-120mm as standard
- Available Euro Profile Cylinder Cut-out distance: 70mm, 72mm, 85mm, 92mm

## Change Master Pin Code (Default is 123456)

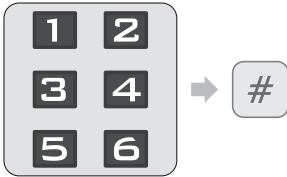
### ► Step 1

Press any button to activate the keypad, then press \*0# to set up the Master Pin Code.



### ► Step 2

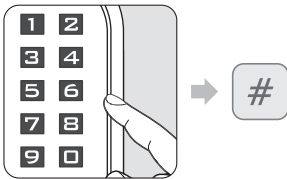
Enter Default Master Pin Code 123456, then press #.



- ❶ Default Master Pin Code is 123456.
- ❷ Correct Master Pin Code: 1 beep followed by green light flashing 1 time.
- ❸ Incorrect Master Pin Code: 2 beeps followed by red light flashing 2 times, then standby.

### ► Step 3

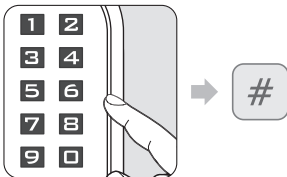
Enter NEW Master Pin Code, then press #.



- ❶ If enter less than 4 digits or over 6 digits, 2 beeps followed by red light flashing 2 times.
- ❷ If code already exists, 2 beeps followed by red light flashing 2 times, then standby.
- ❸ If new Master Pin Code is programmed, 1 beep followed by green light flashing 1 time.

### ► Step 4

Re-enter the new 4-6 digits again, then press #.



- ❶ If the code does not match first code you entered, 2 beeps followed by red light flashing 2 times, then standby.
- ❷ If the code matches, 1 beep followed by green light flashing 1 time.

#### Note

- Master Pin Code can be programmed from 4 to 6 digits.
- Master Pin Code can be used to open door if no user code/card/tag is programmed, once a new user is programmed, Master Pin Code will not be able to use to open the door.
- Master Pin Code can be used to open door if all user cards/tags are deleted.

## Lock Setup with App

Follow below steps to get your lock setup with **WAFERKEY** App.

You can also use the mobile App to set up your lock step-by-step and access installation videos.



### ► Step 1

Download the App by searching "**WAFERKEY**" in the App Store (iOS) or on Google Play (Android).



### ► Step 2

Open the App, simply use a Third Party Login or register a **WAFERKEY** account.

### ► Step 3

Turn on Bluetooth on your smartphone, stay near the lock and follow the instruction in the App.

### ► Step 4

Pair the lock in the App and start to use it.

#### Note

- The **WAFERKEY** App works on iPhone with iOS 13.6 or later, or devices with Android 8.0 or later.
- Be sure to accept any available firmware update.
- Please refer to the instruction in **WAFERKEY** App for more information.
- Once the lock turns to App Mode, ALL the existing user access settings (Key Card, Passcode ...) will be deleted.

## DON'T WANT TO USE THE APP?

Please go to page P05-12 for manual programming instructions for Standalone Mode.

## Questions about your new lock?

Let us help you!

[support@waferlock.com](mailto:support@waferlock.com)

## STANDALONE MODE PROGRAMMING INSTRUCTION

### WARNING

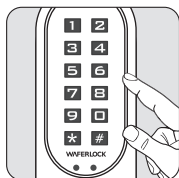
Standalone Mode programming functions (Master Pin Code) are NOT available after the lock is paired with mobile App!  
If you would like to use Standalone Mode, please unpair the lock via **WAFERKEY** App.

Please remember to change Master Pin Code (Default is 123456), referring to the instruction on P03.

### Program New Users Card / Tags

#### ► Step 1

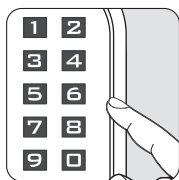
Press any button to activate the keypad, then press \*1# to program new users.



- ❶ If the lock has been programmed with 250 users already, 2 beeps followed by red light flashing 2 times, then standby.

#### ► Step 2

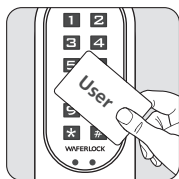
Enter Master Pin Code, then press #.



- ❶ Default Master Pin Code is 123456.
- ❷ Correct Master Pin Code: 1 beep followed by green light flashing 1 time.
- ❸ Incorrect Master Pin Code: 2 beeps followed by red light flashing 2 times, then standby.

#### ► Step 3

Tap new user card to the reader.



- ❶ If user card/tag is programmed: 1 beep followed by green light flashing 1 time, then standby.
- ❷ If a user card/tag card already exists, 2 beeps followed by red light flashing 2 times, then standby.

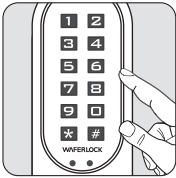
#### Note

- When programming a new user card or new pin code, it will create a 3-digit (001, 002, 003...) "Serial Number" inside lock's memory. Please write down this serial number.
- When performing deleting function, this serial number will be needed. Please use **Serial No. / Name List** page in last pages as a note to copy down the serial number for the user.

## Program New Pin Code

### ► Step 1

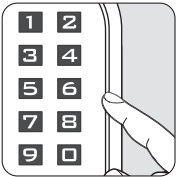
Press any button to activate the keypad, then press \*1#.



- 1 If the lock has been programmed with 250 users already, 2 beeps followed by red light flashing 2 times, then standby.

### ► Step 2

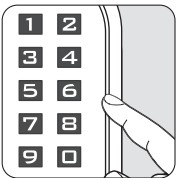
Enter Master Pin Code , then press #.



- 1 Default Master Pin Code is 123456.
- 2 Correct Master Pin Code: 1 beep followed by green light flashing 1 time.
- 3 Incorrect Master Pin Code: 2 beeps followed by red light flashing 2 times, then standby.

### ► Step 3

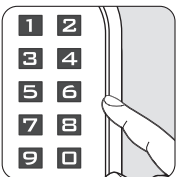
Enter 4~6 digits, then press # (0~9 only, it does not include Pin Code \*# sign).



- 1 If enter less than 4 digits or over 6 digits, 2 beeps followed by red light flashing 2 times, then standby.
- 2 If code already exists, 2 beeps followed by red light flashing 2 times, then standby.
- 3 If code is programmed, 1 beep followed by green light flashing 1 time.

### ► Step 4

Re-enter the new 4~6 digits again, then press #.



- 1 If the code does not match first code you entered, 2 beeps followed by red light flashing 2 times, then standby.
- 2 If the code matches, 1 beep followed by green light flashing 1 time.

#### Note

- When programming a new user card or new pin code, it will create a 3-digit (001, 002, 003...) "Serial Number" inside lock's memory. Please write down this serial number.
- When performing deleting function, this serial number will be needed. Please use **Serial No. / Name List** page in last pages as a note to copy down the number for the user.



## Delete Individual User (Cards / Tags / Pin Codes)

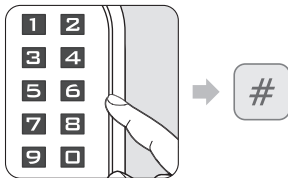
### ► Step 1

Press any button to activate the keypad, then press \* 2 #.



### ► Step 2

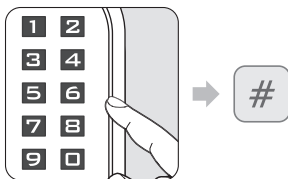
Enter current Master Pin Code, then press #.



- ❶ Correct Master Pin Code: 1 beep followed by green light flashing 1 time.
- ❷ Incorrect Master Pin Code: 2 beeps followed by red light flashing 2 times, then standby.

### ► Step 3

Enter the existing serial number (3 digits, 001~250), then press #.



- ❶ If enter less than 3 digits or over 3 digits, 2 beeps followed by red light flashing 2 times, then standby.
- ❷ If the serial number does not exist, 2 beeps followed by red light flashing 2 times.
- ❸ If correct, user will be deleted, 1 beep followed by green light flashing 1 time.

### Note

- When performing deleting function, other user's serial number will not be changed.
- When the existing user is deleted, user's serial number will be left blank, the next programmed user will replace this blank spot. "i.e.: Deleting serial no.004, and then programming a new user, this new user will be serial no. 004".
- If there are more than one serial no. deleted, the next programmed user will replace that spot ascending sequence; i.e.: no.004 and no.100 are deleted, the next programmed user will replace the no.004 spot, and the following programmed user will replace no.100.

## Delete All User (Cards / Tags / Pin Codes) Reset the lock to default

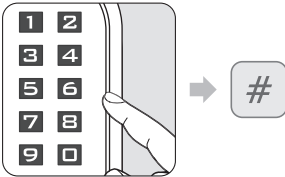
### ► Step 1

Press any button to activate the keypad, then press \*3 #.



### ► Step 2

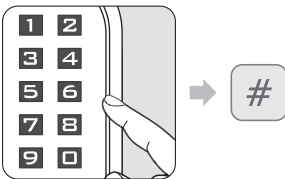
Enter current Master Pin Code, then press #.



- ① Correct Master Pin Code: 1 beep followed by green light flashing 1 time.
- ② Incorrect Master Pin Code: 2 beeps followed by red light flashing 2 times, then standby.

### ► Step 3

Re-enter Master Pin Code, then press #.



- ① Correct Master Pin Code: 1 beep followed by green light flashing 1 time.
- ② Incorrect Master Pin Code: 2 beeps followed by red light flashing 2 times, then standby.

#### Note

- When all User Card and Pin Code are deleted, the lock will be reset to default setting. Master Pin Code will be reset to 123456.
- If the lock was in Dual Mode or Toggle Mode, it will also be set back to Standard + Single Mode.

## Set Up The Lock As Toggle Mode

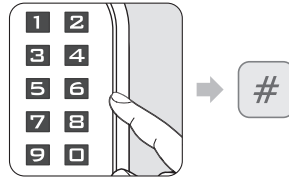
### ► Step 1

Press any button to activate the keypad, then press \* 4 #.



### ► Step 2

Enter current Master Pin Code, then press #.



- ❶ Correct Master Pin Code: 1 beep followed by green light flashing 1 time.
- ❷ Incorrect Master Pin Code: 2 beeps followed by red light flashing 2 times, then standby.

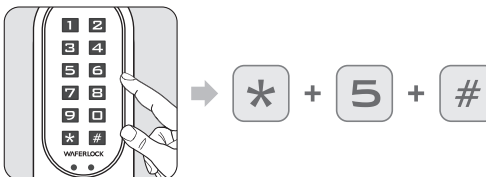
### Note

- Toggle Mode: the lock will switch between "Always Open" and "Always Close" when a valid PIN Code is entered to the lock, or a valid user card is tapped to the reader.

## Set Up The Lock As Standard Mode

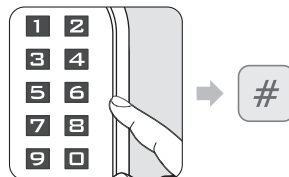
### ► Step 1

Press any button to activate the keypad, then press \* 5 #.



### ► Step 2

Enter current Master Pin Code, then press #.



- ❶ Correct Master PIN Code: 1 beep followed by green light flashing 1 time..
- ❷ Incorrect Master Pin Code: 2 beeps followed by red light flashing 2 times, then standby.

### Note

- After setting the door as Standard Mode, The lock will be set from manual locking to automatic.

## Set Up The Lock As Dual Mode

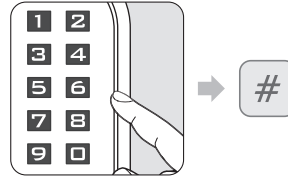
### ► Step 1

Press any button to activate the keypad, then press \* 6 #.



### ► Step 2

Enter current Master Pin Code, then press #.



- ❶ Correct Master Pin Code: 1 beep followed by green light flashing 1 time.
- ❷ Incorrect Master Pin Code: 2 beeps followed by red light flashing 2 times, then standby.

### Note

- Dual Mode will require a user to swipe a valid user card then enter a valid PIN Code to access.
- Dual Mode can be used in high security place such as bank office doors.

## Set Up The Lock As Single Mode

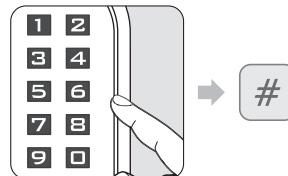
### ► Step 1

Press any button to activate the keypad, then press \* 7 #.



### ► Step 2

Enter current Master Pin Code, then press #.



- ❶ Correct Master PIN Code: 1 beep followed by green light flashing 1 time..
- ❷ Incorrect Master Pin Code: 2 beeps followed by red light flashing 2 times, then standby.

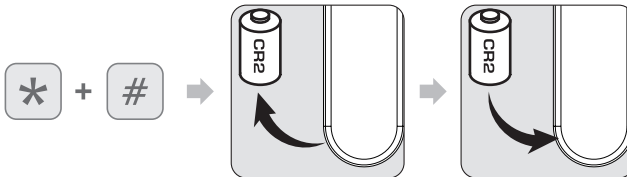
## Combination Of Lock Modes

	Standard	Toggle
Single	This is a default setting. When the lock is in Standard + Single mode, once unlocking the door, it will be automatically locked after 6 seconds.	When lock is in Toggle + Single mode, the lock will switch between "always open" and "always close" when a valid PIN Code is entered or valid user card is tapped on.
Dual	When the lock is in standard + dual mode, the lock will require user to flash a valid user card and enter a valid PIN Code to access.	When the lock is in Toggle + Dual mode, the lock will switch between "always open" and "always close" when swiping a valid user card and enter a valid PIN Code.

## Reset The Lock Master Code Back to default 123456 and all the programmed users will remain.

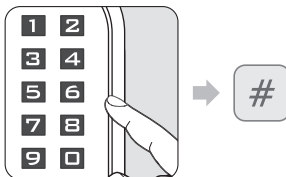
### ► Step 1

Hold and press \* and # button together. There will be 2 beeps (1 long beep, 1 short beep) and remove the battery, then insert it at the same time.



### ► Step 2

After a long beep followed by red and green light blink alternatively, enter a valid PIN Code or tap a valid user card, then press #.



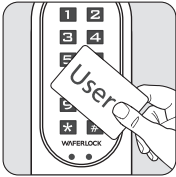
### ► Step 3

After long beep, the Master PIN Code will be reset back to default: 123456.

## Open Door With User Card

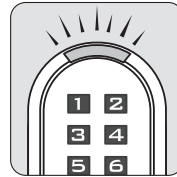
### ► Step 1

Approach the reader by a user card.



### ► Step 2

The Led light up.

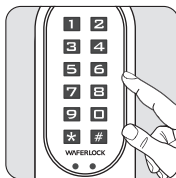


- ❶ If the card is valid (Programmed), 1 beep followed by green light flashing 1 time.
- ❷ If the card is invalid (Not programmed), 2 beeps followed by red light flashing 2 times, then standby.

## Open Door With Pin Code

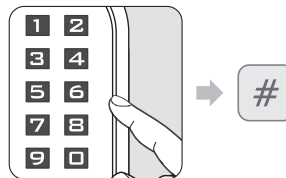
### ► Step 1

Press any button to activate the keypad.



### ► Step 2

Press previous programmed PIN Code, then press # button.



- ❶ If enter less than 4 digits or over 6 digits, 2 beeps followed by red light flashing 2 times, then standby.
- ❷ If code is programmed, 1 beep followed by green light flashing 1 time.

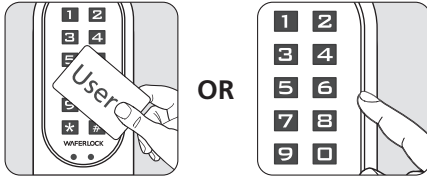
### Note

- During entering PIN Code, if the users approach to the reader with a user card, the lock will be interrupted then react to the user card first.
- If an invalid code (Master PIN/PIN) has been entered to the lock more than 5 times, the anti-theft function will be initiated for 3 minutes. During this period, the keypad will be locked.
- If enter the invalid code 1 time after 3 minutes, the anti-theft function will be initiated for 3 minutes again.
- The anti-theft counter will be reset once the valid PIN Code is entered to the lock. When the lock is in Dual Mode, the counter will only reset when both valid PIN Code & valid user card are presented to the lock.
- During the 3 minutes lock-up, a valid user card can still be used to access.

## Low Power Warning

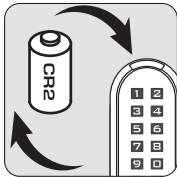
### ► Step 1

- 1 When using user cards to unlock, lock the door, or programming card to program.
- 2 When using pin codes to unlock or lock the door.



### ► Step 2

If the lock battery is low, there is an acoustic warning for the user with 3 short beeps 5 times, followed by orange light flashing. Please replace a new battery to keep lock operating well.



## Emergency External Power Supply

### ► Step 1

Backup 9V battery contact point is at the front panel.



### ► Step 2

Connect 9V battery with contact points.

